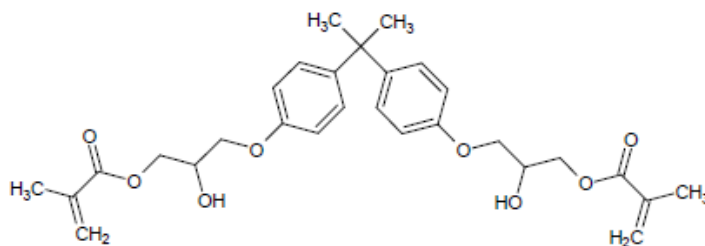


TECH DATA SHEET

H1350



DESCRIPTION

Name: 2-Hydroxy-3-[4-[2-[4-[2-methylprop-2-enoyloxy]propoxy]phenyl]propan-2-yl]phenoxy]propyl]2-methylprop-2-enoate

Synonym: BisGMA

TYPICAL PHYSICAL AND CHEMICAL PROPERTIES

PROPERTY	RESULT
Appearance at Room Temperature	Clear, colorless liquid
Molecular Formula	C ₂₉ H ₃₆ O ₈
Molecular Weight	512.591
Viscosity @ 25°C	700,000 cps
Refractive Index @ 20°C	1.540
CAS Registration Number	1565-94-2
Recommended Storage Temp	25°C

Data is for reference only and may vary depending on testing method used. The structure shown above is an idealized representation of a statistical distribution.

RECOMMENDED FORMULATION USE:

H1350 is recommended as a base resin for dental restorative formulations.

CONTACT:

REQUEST A SAMPLE OR PLACE AN ORDER

Customer Support

☎ 858-348-1122

✉ info@dmhpi.com.com

REF: DMHPI Part Number: H1350

• 10080 Willow Creek Road • San Diego, CA 92131 • Tel: (858) 348-1122 • Fax: (858) 348-1123 •
• www.dmhpi.com •