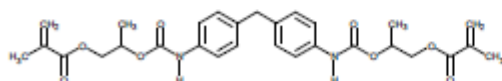
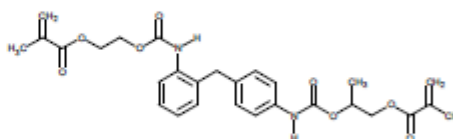
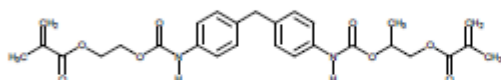
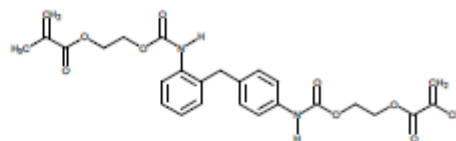
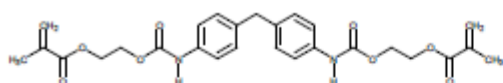


TECH DATA SHEET

H1345



DESCRIPTION

Name: [BisGMA Replacement](#)

Synonym: [HEMA and HPMA addition products with MDI](#)

TYPICAL PHYSICAL AND CHEMICAL PROPERTIES

PROPERTY	RESULT
Appearance at Room Temperature	Yellowish, liquid
Molecular Formula	$C_{27}H_{35}N_2O_8 \rightarrow C_{29}H_{34}N_2O_8$
Molecular Weight	510.536 \rightarrow 538.589
Viscosity @ 40°C and 5RPM	125,000cps
Refractive Index @ 20°C	1.55
CAS Registration Number	2093308-28-0
Recommended Storage Temp	25°C

Data is for reference only and may vary depending on testing method used. The structure shown above is an idealized representation of a statistical distribution.

RECOMMENDED FORMULATION USE:

[H1345](#) is recommended as a base resin for dental restorative formulations.

CONTACT:

REQUEST A SAMPLE OR PLACE AN ORDER

Customer Support

☎ 858-348-1122

✉ info@dmhpi.com

REF: [DMHPI Part Number: H1345](#)

• 10080 Willow Creek Road • San Diego, CA 92131 • Tel: (858) 348-1122 • Fax: (858) 348-1123 •
• www.dmhpi.com •