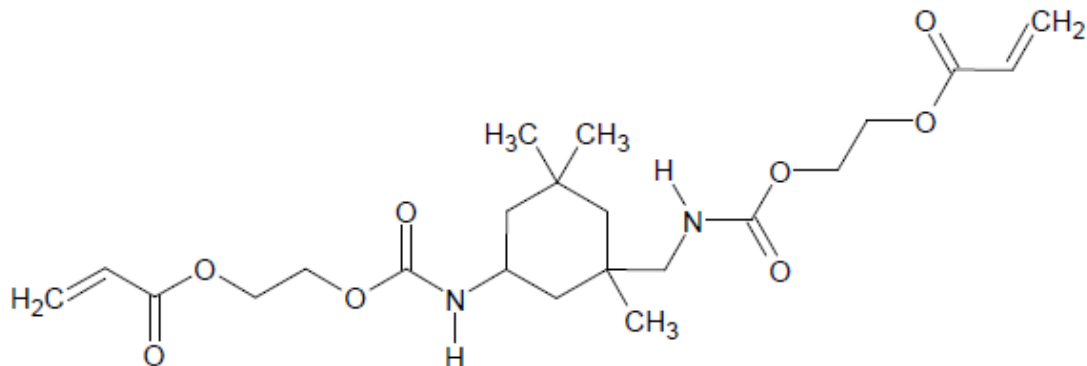


TECH DATA SHEET**H1333****DESCRIPTION**Name: **Adduct of IPDI and HEA**Synonym: **IPDI + 2-Hydroxyethyl Acrylate****TYPICAL PHYSICAL AND CHEMICAL PROPERTIES**

PROPERTY	RESULT
Appearance at Room Temperature	Clear, colorless, liquid
Molecular Formula	C ₂₂ H ₃₄ N ₂ O ₈
Molecular Weight	454.514
Viscosity @ 25°C / 5rpm	12,900 cps
TGA Weight Loss @ 100°C	0.974
CAS Registration Number	Not Registered
Recommended Storage Temp	5°C

Data is for reference only and may vary depending on testing method used. The structure shown above is an idealized representation of a statistical distribution.

RECOMMENDED FORMULATION USE:

H1333 is recommended for acrylic nail gel top coats; as a reactive monomer.

CONTACT:**REQUEST A SAMPLE OR PLACE AN ORDER**

Customer Support

☎ 858-348-1122

✉ info@dmhpi.comREF: **DMHPI Part Number: H1333**

• 10080 Willow Creek Road • San Diego, CA 92131 • Tel: (858) 348-1122 • Fax: (858) 348-1123 •
• www.dmhpi.com •