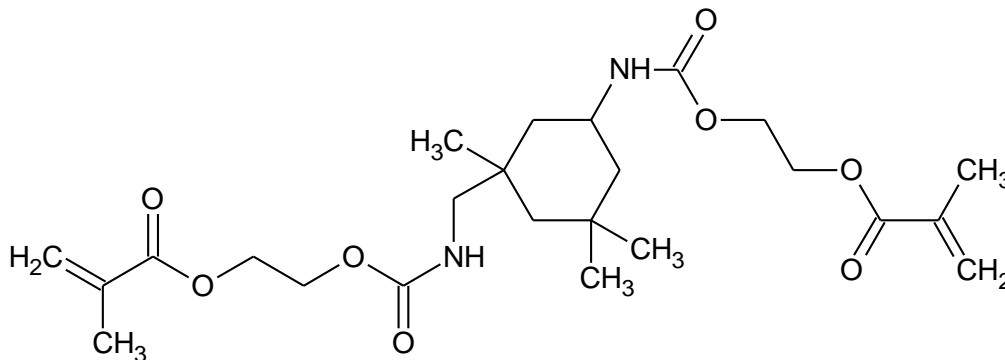


TECH DATA SHEET

H1230



DESCRIPTION

Name: IPDI Urethane Dimethacrylate, Isophorone Diisocyanate Urethane Dimethacrylate

Synonym: UDMA-IPDI

HIGHLIGHTS

H1230 is a methacrylate modified urethane monomer that is colorless with low cure shrinkage. H1230 is often used in light cure dental applications. Unlike BisGMA or EBDMA, it is not based upon a Bisphenol A backbone and therefore does not exhibit estrogenic behavior and does not have the potential to act as an endocrine disruptor.

TYPICAL PHYSICAL AND CHEMICAL PROPERTIES

PROPERTY	RESULT
Appearance at Room Temperature	Colorless liquid
Molecular Formula	C ₂₄ H ₃₈ N ₂ O ₈
Molecular Weight	482.6 daltons
Viscosity @ 60°C	5,000 cP
Refractive Index @ 20°C	1.496
CAS Registration Number	TBD
Recommended Storage Temp	5°C or below

Data is for reference only and may vary depending on testing method used. The structure shown above is an idealized representation of a statistical distribution.

RECOMMENDED FORMULATION USE:

H1230 is recommended for use as a base resin in dental applications.

CONTACT:

REQUEST A SAMPLE OR PLACE AN ORDER

Customer Support

☎ 858-348-1122

✉ info@dmhpi.com

REF: DMHPI Part Number: H1230